

IL CLOUD COME ENABLER DELLA DIGITAL TRANSFORMATION

Ing. Stefano Carlini
Head of Business Development and Strategic Alliances, Cloudtec S.r.l.

Ing. Massimo Perillo
Chief Operating Officer, Cloudtec S.r.l.

Seminario «Competenze per la trasformazione digitale»
Ordine degli Ingegneri della Provincia di Palermo, 10 aprile 2021





SOMMARIO

Chi siamo

La Digital Transformation

- Fattori abilitanti: il Cloud

Nuove competenze e percorsi professionalizzanti

Casi d'uso ed applicazioni cloud based:

- Artificial intelligence & machine learning



ABOUT ME

Ingegnere meccanico «prestato» all'informatica più di 20 anni fa; esperienza in grandi imprese e PMI locali.

Background informatico su sistemi «preistorici»; analisi dei requisiti e IT project management.



Propensione alla **organizzazione dei processi** e alla **gestione dell'innovazione**, anche cofinanziata

Oggi, **direttore organizzativo** in Cloudtec S.r.l. (organizzazione e controllo di gestione, ottimizzazione della struttura organizzativa, integrazione dei processi, delle procedure e delle informazioni).



ABOUT US

Startup Innovativa,
distribuita tra mare e pianura,
fatta di persone che credono
in un futuro con
«la testa tra le nuvole»
(20 persone – 1,5 M€ fatt. 2020)

Realizziamo soluzioni per la
Trasformazione Digitale
che semplificano i processi ed
estraggono valore dalle informazioni.



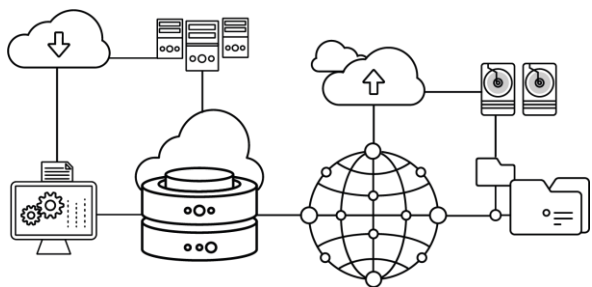
Utilizziamo la tecnologia
Google Cloud
per portare nelle organizzazioni
tutta la potenza
del Cloud Intelligente.

Ci occupiamo di
Migrazione Cloud,
Intelligenza Artificiale
ed **Analisi dei Dati.**

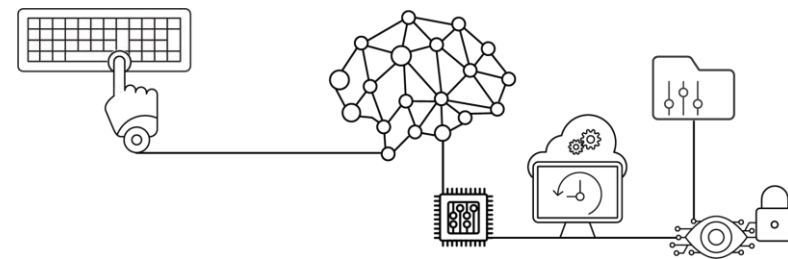


EXPERTISE

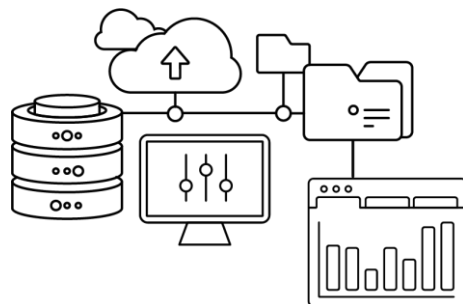
CLOUD MIGRATION



INTELLIGENZA ARTIFICIALE



DATA ANALYSIS

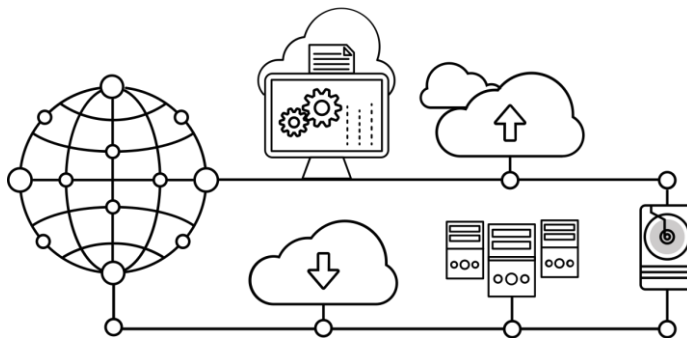




EXPERTISE

CLOUD MIGRATION

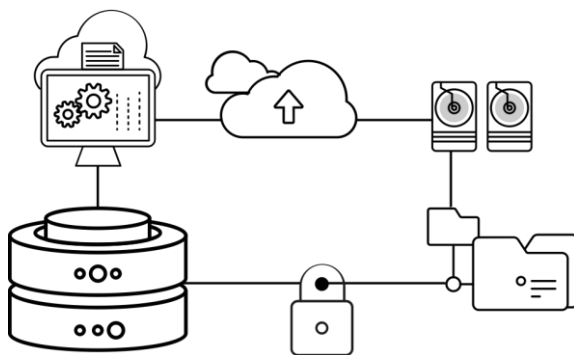
CLOUDIFICATION



Il nostro Partner tecnologico è Google, che offre una piattaforma server-less tra le più performanti e sicure utilizzabile con logica pay-per-use.

Realizziamo progetti di **refactoring** e migrazione di applicazioni sul Cloud Google utilizzando le tecnologie di riferimento (Docker, Kubernetes, Anthos).

DIGITAL WORKSPACE

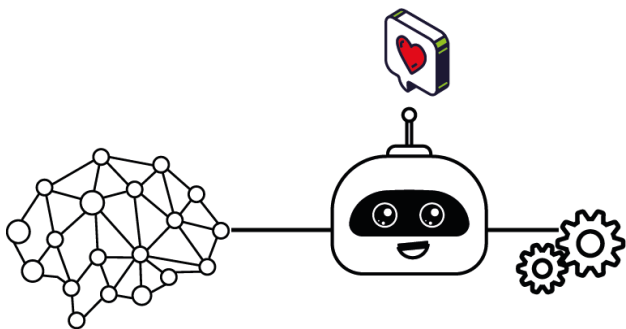


Abbiamo sviluppato soluzioni specifiche per applicazioni di telelavoro o di formazione a distanza che consentono di utilizzare il Cloud garantendo tutta la sicurezza e la qualità del servizio necessarie.

La nostra piattaforma **Smart WorkSpace**, combina in un unico prodotto la tecnologia di accesso intelligente Infiot e la Suite Google Workspace che contiene tutti gli strumenti di collaborazione remota in cloud.



EXPERTISE

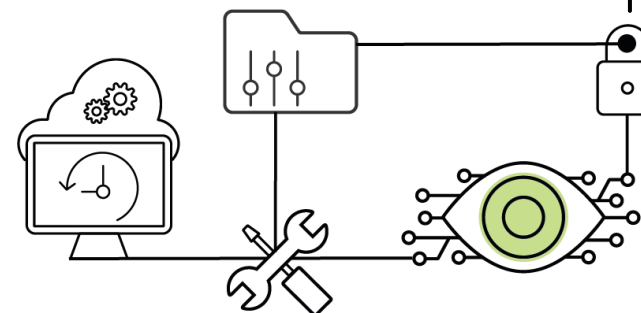


INTELLIGENT DIALOG AGENT

Cloudbot è la piattaforma cloud-native di Intelligenza Artificiale sviluppata da Cloudtec per la realizzazione di Assistenti Digitali, cioè di chatbot evoluti in grado, una volta addestrati, di gestire autonomamente le conversazioni con esseri umani e di realizzare attività anche molto complesse.

Oltre a comprendere il linguaggio naturale dell'utente ed a interagire con esso, Cloudbot è in grado di integrarsi coi sistemi aziendali e quindi svolgere attività su specifica richiesta.

(*) ARTIFICIAL INTELLIGENCE



INTELLIGENT ASSISTED REALITY

Cloudvision è la prima soluzione di Realtà Assistita Intelligente in cloud che usa l'Intelligenza Artificiale Google per consentire ad operatori dotati di smartglass o smartphone di ottenere supporto in tempo reale attraverso l'attivazione di applicazioni di digital assistant o di analisi di immagini.



EXPERTISE

DATA
ANALYSIS



CLOUDMETRIX



Cloudmetrix è una applicazione di Network ed IoT Intelligent Analytics pensata per fornire una piattaforma scalabile e ad alte prestazioni per la raccolta e la correlazione, anche in tempo reale, di dati provenienti da reti (fisse o mobili) e dispositivi IoT.

Basata su piattaforma GCP, Cloudmetrix consente la raccolta di dati da sorgenti dati non omogenee, la loro normalizzazione, storicizzazione, elaborazione e visualizzazione sulla base delle logiche fornite dal cliente.

Cloudmetrix sfrutta le più avanzate tecnologie di Machine Learning della Google Cloud Platform per realizzare correlazioni intelligenti e fornire analisi predittive.



GOOGLE
SMART
ANALYTICS

Google Cloud Platform rende disponibile una delle più potenti piattaforme per la raccolta, la gestione e l'analisi di dati.

Cloudtec realizza soluzioni di data management scalabili e potenziati da tecnologie di Machine Learning per realizzare applicazioni che consentano di raccogliere e correlare dati in modo automatico e contestualizzato.



Il Cloud come enabler della Digital Transformation



Cos'è la Digital Transformation



Google

definizione digital transformation



[Tutti](#) [Notizie](#) [Immagini](#) [Video](#) [Shopping](#) [Altro](#) [Impostazioni](#) [Strumenti](#)

Circa 370.000 risultati (0,46 secondi)





Cos'è la Digital Transformation

Insieme di **cambiamenti** prevalentemente **tecnologici, culturali, organizzativi, sociali, creativi e manageriali**, associati con le applicazioni di tecnologia digitale, in tutti gli aspetti della società umana.

Wikipedia

Digital transformation can refer to **anything from IT modernization** (for example, cloud computing), to digital optimization, to the invention of new digital business models. The term is widely used in public-sector organizations to refer to modest initiatives such as putting services online or legacy modernization. Thus, the term is more like “digitization” than “digital business transformation.”

Gartner Group



Digital Transformation vs. innovazione digitale

«**Presenza di coscienza**» dell'importanza dell'IT:

- a livello enterprise
- a livello che consumer

(Covid-19).

Finalmente, il digitale è **pensato come un «mezzo»** (e non come il fine) per agevolare il business o il tempo libero.

Digital transformation: pervasiva, ma non invasiva !

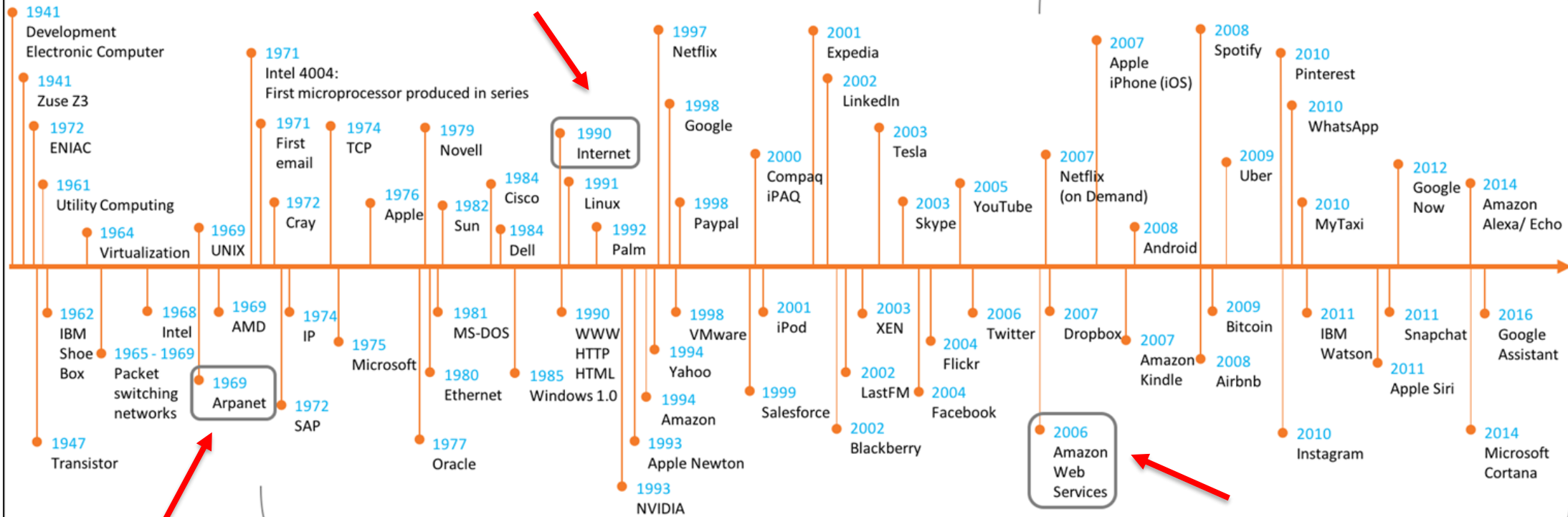
La trasformazione digitale favorisce il nostro bisogno di **cooperazione**.



Digital Transformation vs. innovazione digitale



Impact of Cloud & Artificial Intelligence



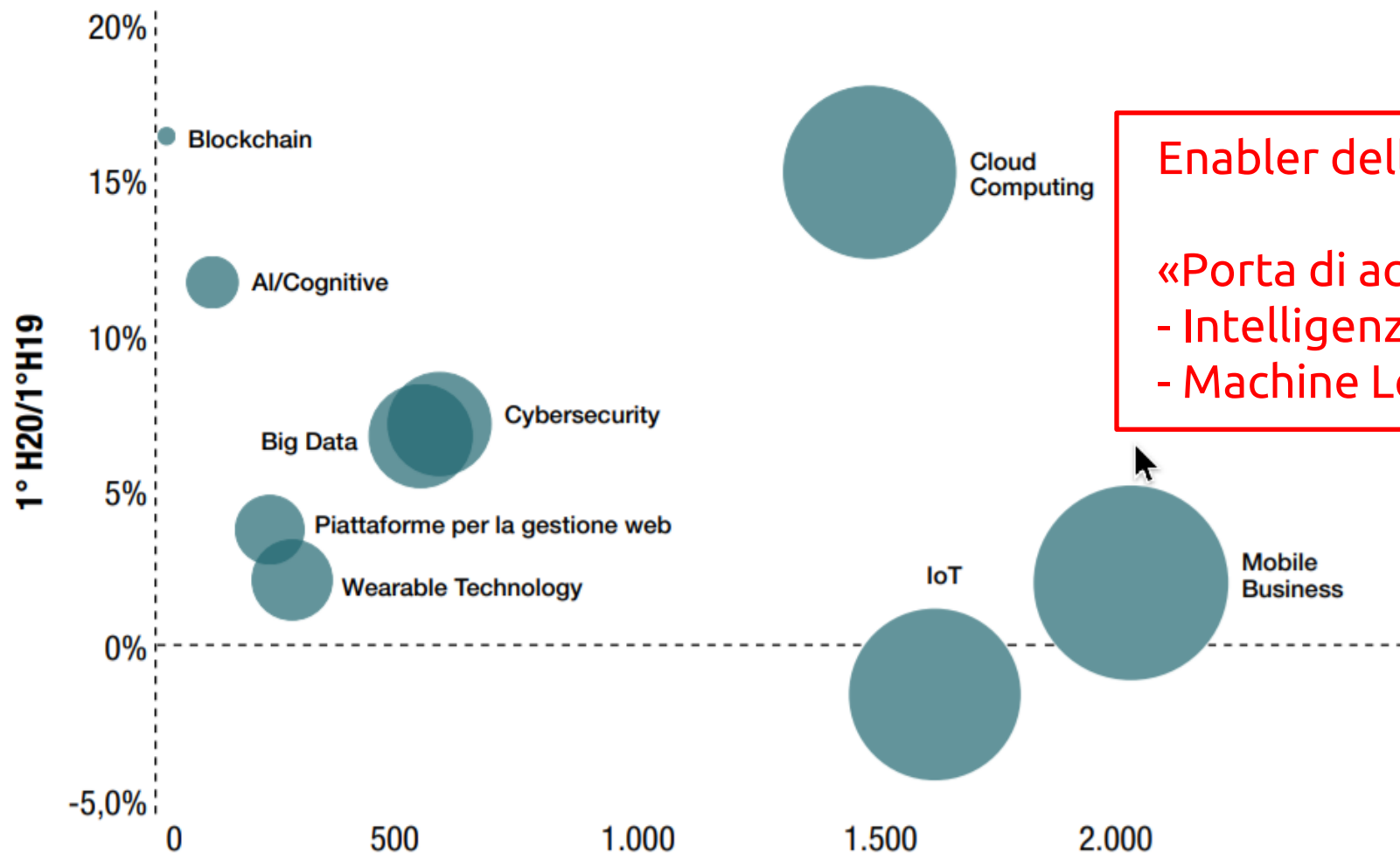
+ 40 Years

Copyright 2018, Rene Buest, <http://renebuest.com>





I Digital Enabler



Enabler della cooperazione !

«Porta di accesso» a servizi di:

- Intelligenza artificiale
- Machine Learning...

Figura 11: Dimensioni e trend dei Digital Enabler nel primo semestre 2020

Variazioni % sullo stesso semestre dell'anno precedente

Fonte: NetConsulting cube 2020



Cloud: è una rete di server remoti ubicati in tutto il mondo, collegati tra loro e che operano come un unico ecosistema. Questi server possono archiviare e gestire dati, eseguire applicazioni o distribuire contenuti o servizi.



Cloud pubblico: Il cloud pubblico è definito come servizi di elaborazione offerti da provider di terze parti tramite la rete Internet pubblica e disponibili per chiunque voglia usarli o acquistarli.

Cloud privato: servizi di calcolo offerti tramite Internet o una rete interna privata solo a utenti selezionati e non al pubblico generale.

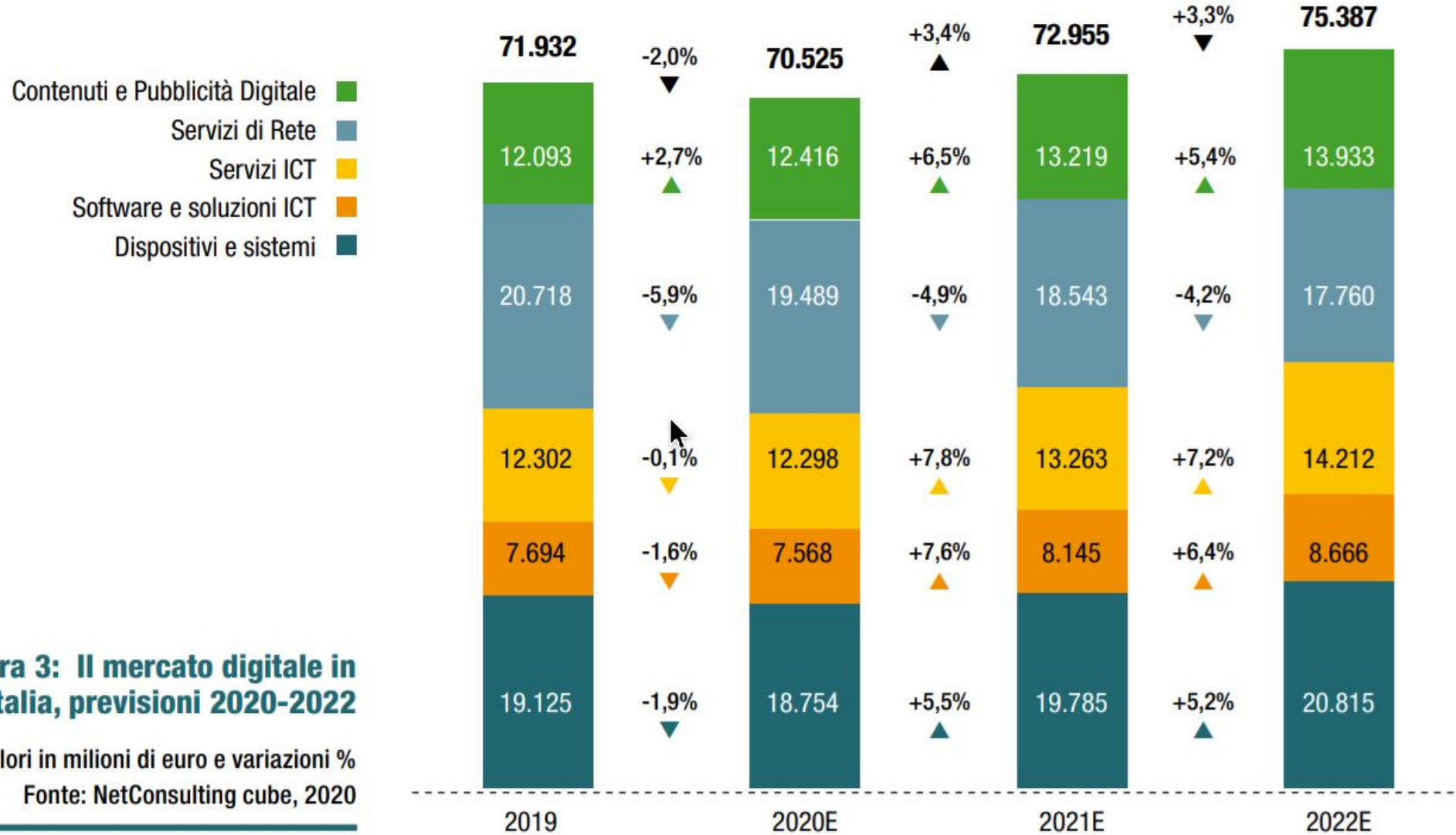


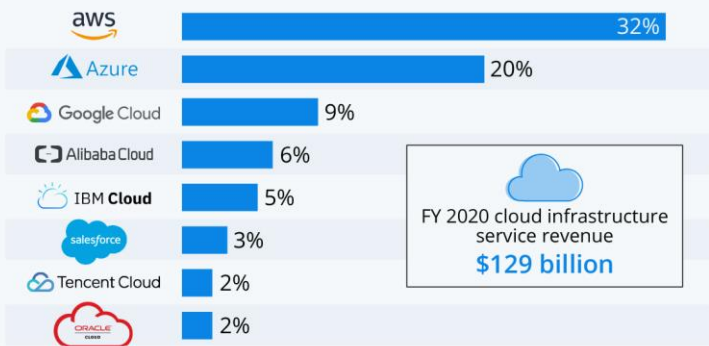
Figura 3: Il mercato digitale in Italia, previsioni 2020-2022

Valori in milioni di euro e variazioni %
Fonte: NetConsulting cube, 2020



Amazon Leads \$130-Billion Cloud Market

Worldwide market share of leading cloud infrastructure service providers in Q4 2020*



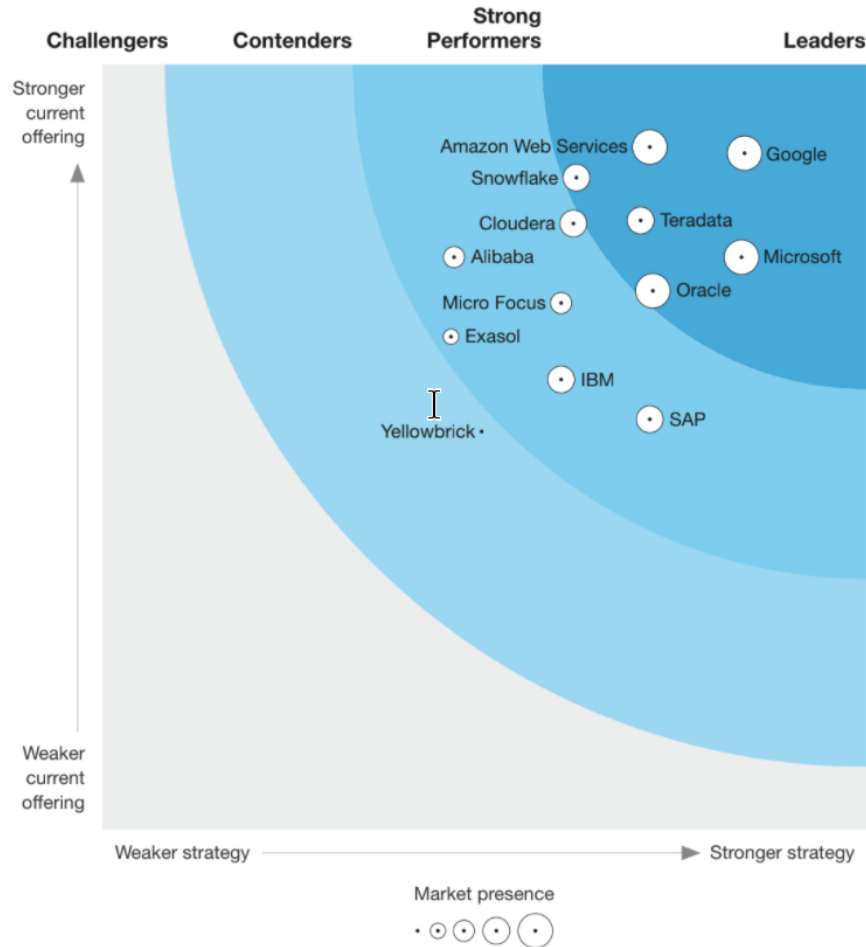
FY 2020 cloud infrastructure service revenue
\$129 billion

* includes platform as a service (PaaS) and infrastructure as a service (IaaS) as well as hosted private cloud services

Source: Synergy Research Group



THE FORRESTER WAVE™ Cloud Data Warehouse Q1 2021



© 2021 Cockroach Labs, Inc

2021 Cloud Report Results

Benchmark	1st	2nd	3rd
1 core CPU	Google Cloud	Azure	aws
16 core CPU	aws	Google Cloud	Azure
Network Throughput	Google Cloud	aws	Azure
Network Latency	aws	Azure	Google Cloud
Storage I/O Read IOPS	Azure	Google Cloud	aws
Storage I/O Write IOPS	Azure	Google Cloud	aws
Storage I/O Read Throughput	Google Cloud	Azure	aws
Storage I/O Write Throughput	Google Cloud	Azure	aws
Storage I/O Read Latency	aws	Google Cloud	Azure
Storage I/O Write Latency	Azure	Google Cloud	aws
Max. tpm	Google Cloud	Azure	aws
\$/tpm	aws	Azure	Google Cloud

Cockroach Labs





TIM E GOOGLE CLOUD: AL VIA LA PARTNERSHIP STRATEGICA

04/03/2020 - 19:45

Comunicato
Corporate

**TIM: Salvatore Rossi e
Luigi Gubitosi...**

01 APRILE 2021

TIM e Google Cloud annunciano oggi la firma dell'accordo ufficiale che darà il via a una collaborazione tecnologica congiunta, a seguito del protocollo d'intesa (MoU) firmato a novembre 2019 tra le due società. TIM e Google Cloud hanno concordato di lavorare insieme alla creazione di innovativi servizi di cloud pubblico, privato e ibrido per arricchire l'offerta di servizi tecnologici di TIM. Come risultato di questa collaborazione, TIM intende estendere la propria leadership nei servizi di Cloud ed Edge Computing. TIM punta a un'accelerazione nella crescita dei suoi ricavi da servizi tecnologici, con l'obiettivo di raggiungere 1 miliardo di euro di ricavi e 0,4 miliardi di euro di EBITDA entro il 2024.



Telefónica

Movistar / O₂ / vivo / ARE TELEFÓNICA BRANDS

Office

Shareholders & Investors

Responsible Business

Careers

Public Policy

Innovation

News Detail Google Cloud and Telefónica partner to accelerate digital transformation for Spanish businesses

Google Cloud and Telefónica partner to accelerate digital transformation for Spanish businesses



Engagements Group Finance Jobs Newsroom

Newsroom > Press releases > Orange and Google Cloud to form strategic partnership in

28 July 2020

Cybersecurity Data AI Innovation Offers and Services

Orange and Google Cloud to form strategic partnership in data, AI and edge computing services



Orange and Google Cloud today announced a strategic partnership to accelerate the transformation of Orange's IT infrastructure and the development of future cloud



Emerging and redundant job roles

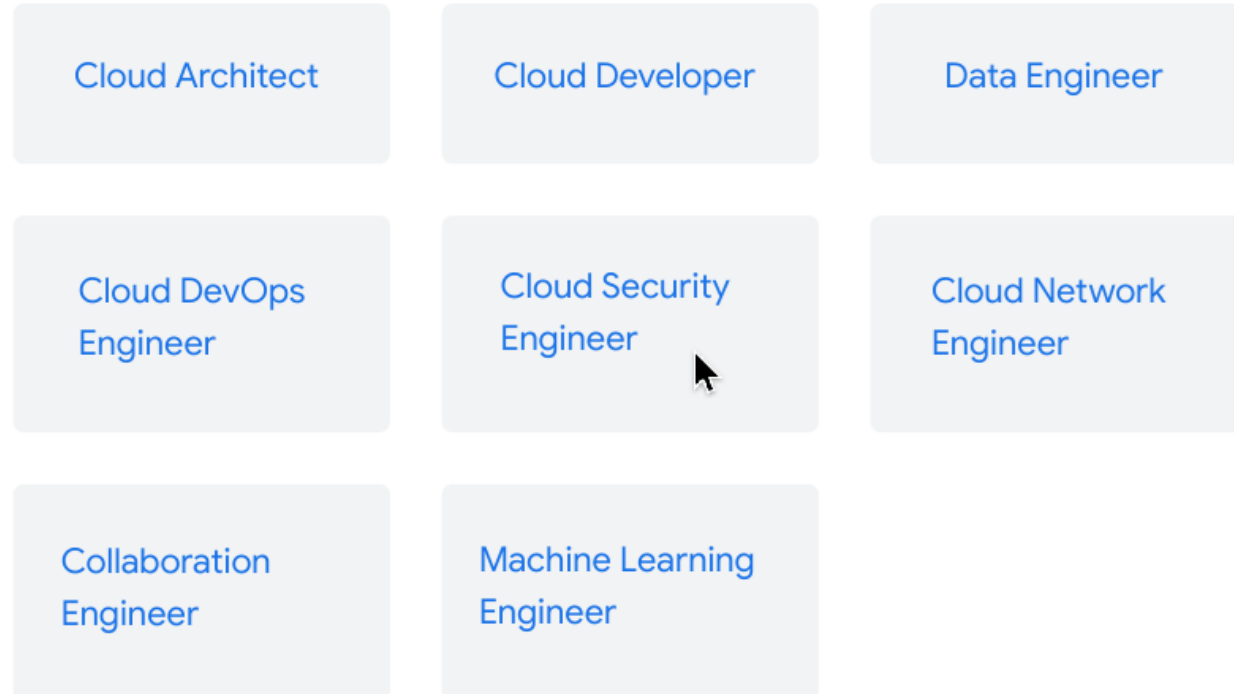
Role identified as being in high demand or increasingly redundant within their organization, ordered by frequency

EMERGING

1.	AI and Machine Learning Specialists
2.	Internet of Things Specialists
3.	Data Analysts and Scientists
4.	Digital Transformation Specialists
5.	Assembly and Factory Workers
6.	Project Managers
7.	Process Automation Specialists
8.	General and Operations Managers
9.	Big Data Specialists
10.	Application engineers

World Economic Forum - The Future of Jobs Report 2020 (pag. 85)

Le nuove professioni





Google Cloud

DEVELOPER'S CHEAT SHEET

v2021.3.3

Created by the [Google Developer Relations Team](#)
Maintained at <https://4words.dev>
Feedback? @gregsramblings @pvergadia

COMPUTE

- Cloud Functions: Event-driven serverless functions
- App Engine: Managed app platform
- Cloud Run: Serverless for containerized applications
- Kubernetes Engine (GKE): Managed Kubernetes/containers
- Compute Engine: VMs, GPUs, TPUs, Disks
- Bare Metal Solution: Hardware for specialized workloads
- Preemptible VMs: Short-lived compute instances
- Shielded VMs: Hardened VMs
- Sole-tenant Nodes: Dedicated physical servers
- VMware Engine: VMware on Compute Engine

STORAGE

- Cloud Filestore: Managed NFS server
- Cloud Storage: Multi-class multi-region object storage
- Persistent Disk: Block storage for VMs
- Local SSD: VM locally attached SSDs

DATABASE

- Cloud Bigtable: Petabyte-scale, low-latency, non-relational
- Cloud Firestore: Serverless NoSQL document DB
- Cloud Memorystore: Managed Redis and Memcached
- Cloud Spanner: Horizontally scalable relational DB
- Cloud SQL: Managed MySQL/PostgreSQL/SQL Server
- Database Migration Service: Migrate to Cloud SQL
- DB Insights: SQL Inspector

DATA AND ANALYTICS

- BigQuery: Data warehouse/analytics
- BigQuery BI Engine: In-memory analytics engine
- BigQuery ML: BigQuery model training/serving
- Cloud Composer: Managed workflow orchestration service
- Cloud Data Fusion: Graphically manage data pipelines
- Cloud Dataflow: Stream/batch data processing
- Cloud Dataprep: Visual data wrangling
- Cloud Dataproc: Managed Spark and Hadoop
- Cloud Pub/Sub: Global real-time messaging
- Data Catalog: Metadata management service
- Data Studio: Collaborative data exploration/dashboarding
- Looker: Enterprise BI and Analytics

HYBRID AND MULTI-CLOUD

- Anthos: Enterprise hybrid/multi-cloud platform
- Anthos Clusters: Hybrid/on-prem Kubernetes Engine
- Anthos Config Management: Policy and security automation
- Anthos Service Mesh: Managed service mesh (Istio)
- Cloud Run for Anthos: Serverless development for Anthos
- GP Marketplaces for Anthos: Pre-configured containerized apps
- Migrate for Anthos: Migrate VMs to Kubernetes Engine
- Operations: Monitoring, logging, troubleshooting
- Cloud Build: Continuous integration/delivery platform
- Traffic Director: Service mesh traffic management
- APIgee API Management: API management, development, security

AI/ML

- AI Platform Data Labeling: Data labeling by humans
- AI Platform Deep Learning VMs: Preconfigured VMs for deep learning
- AI Platform Deep Learning Containers: Preconfigured containers for deep learning
- AI Platform Notebooks: Managed JupyterLab notebook instances
- AI Platform Pipelines: Hosted ML workflows
- AI Platform Predictions: Autoscaled model serving
- AI Platform Training: Distributed AI training
- AI Platform: Managed platform for ML
- AutoML Natural Language: Custom text models
- AutoML Tables: Custom structured data models
- AutoML Translation: Custom domain-specific translation
- AutoML Video Intelligence: Custom video annotation models
- AutoML Vision: Custom image models
- Cloud Natural Language API: Text parsing and analysis
- Cloud Speech-to-Text API: Convert audio to text
- Cloud Talent Solutions API: Job search with ML
- Cloud Text-to-Speech API: Convert text to audio
- Cloud TPU: Hardware acceleration for ML
- Cloud Translation API: Language detection and translation
- Cloud Video Intelligence API: Scene-level video annotation
- Cloud Vision API: Image recognition and classification
- Contact Center AI: AI in your contact center
- Dialflow: Create conversational interfaces
- Document AI: Analyze, classify, search documents
- Explainable AI: Understand ML model predictions
- Recommendations AI: Create custom recommendations
- Vision Product Search: Visual search for products

NETWORKING

- Carrier Peering: Peer through a carrier
- Direct Peering: Peer with GCP
- Dedicated Interconnect: Dedicated private network connection
- Partner Interconnect: Connect on-prem network to VPC
- Cloud Armor: DDoS protection and WAF
- Cloud CDN: Content delivery network
- Cloud DNS: Programmable DNS serving
- Cloud Load Balancing: Multi-region load distribution/balancing
- Cloud NAT: Network address translation service
- Cloud Router: VPC/on-prem network route exchange (BGP)
- Cloud VPN (HA): VPN (Virtual private network connection)
- Network Service Tiers: Price vs performance tiering
- Network Telemetry: Network telemetry service
- Traffic Director: Service mesh traffic management
- Google Cloud Service Mesh: Service-aware network management
- Virtual Private Cloud: Software defined networking
- VPC Service Controls: Security perimeter for API-based services
- Network Intelligence Center: Network monitoring and topology

GAMING

- Google Cloud Game Servers: Orchestrate Agones clusters

INTERNET OF THINGS (IOT)

- Cloud IoT Core: Manage devices, ingest data

IDENTITY AND SECURITY

- Access Transparency: Audit cloud provider access
- Assured Workloads: Workload compliance controls
- Binary Authorization: Kubernetes deploy-time security
- Certificate Authority Service: Managed private CAs
- Cloud Asset Inventory: All assets, one place
- Cloud Audit Logs: Audit trails for GCP
- Cloud DLP: Classify and redact sensitive data
- Cloud HSM: Hardware security module service
- Cloud IAM: External keys you control
- Cloud IAM: Resource access control
- Cloud Identity: Manage users, devices & apps
- Cloud Identity-Aware Proxy: Identity-based app access
- Cloud KMS: Hosted key management service
- Cloud Resource Manager: Cloud project metadata management
- Cloud Security Scanner: Security management & data risk platform
- Confidential Computing: App engine security scanner
- Context-aware Access: Encrypt data in-use
- Event Threat Detection: End-user attribute-based access control
- Managed Service for Microsoft Active Directory: Scans for suspicious activity
- Secret Manager: Managed Microsoft Active Directory
- Store and manage secrets

IDENTITY AND SECURITY (CONT.)

- Security Key Enforcement: Two-step key verification
- Hardened VMs: Hardened VMs
- Titan Security Key: Two-factor authentication (2FA) device
- VPC Service Controls: VPC data constraints

MANAGEMENT TOOLS

- Cloud APIs: APIs for cloud services
- Cloud Billing API: Programmatically manage GCP billing
- Cloud Billing: Billing and cost management tools
- Cloud Console: Web-based management console
- Cloud Deployment Manager: Templated infrastructure deployment
- Cloud Mobile App: iOS/Android GCP manager app
- Private Catalog: Internal Solutions Catalog
- Cloud Debugger: Live production debugging
- Error Reporting: App error reporting
- Cloud Logging: Centralized logging
- Cloud Monitoring: Infrastructure and application monitoring
- Cloud Profiler: CPU and heap profiling
- Cloud Trace: App performance insights
- Transparent SLIs: Monitor GCP services

DEVELOPER TOOLS

- Cloud Build: Continuous integration/delivery platform
- Cloud Code for IntelliJ: IntelliJ IDE tools
- Cloud Code for VS Code: VS Code GCP tools
- Cloud Code: Cloud native IDE extensions
- Cloud Tools for Eclipse: Eclipse GCP tools
- Cloud Tools for Visual Studio: Visual Studio GCP tools
- Gradle App Engine Plugin: Gradle App Engine plugin
- Maven App Engine Plugin: Maven App Engine plugin
- Cloud SDK: CLI for GCP
- Cloud Shell: Browser-based terminal/CLI
- Artifact Registry: Universal package manager
- Cloud Source Repositories: Hosted private git repos
- Container Registry: Private container registry/storage
- Container Analysis: Automated security scanning
- Eventarc: Event-driven Cloud Run services
- Cloud Scheduler: Managed cron job service
- Cloud Tasks: Asynchronous task execution
- Cloud Workflows: HTTP services orchestration

MIGRATION TO GCP

- BigQuery Data Transfer Service: Bulk import analytics data
- Cloud Data Transfer: Data migration tools/CLI
- Google Transfer Appliance: Rentable data transport box
- Storage Transfer Service: Online/on-premises data transfer
- Migrate for Anthos: Migrate VMs to GKE containers
- Migrate for Compute Engine: Compute Engine migration tools
- Migrate from Amazon Redshift: Migrate from Redshift to BigQuery
- Migrate from Teradata: Migrate from Teradata to BigQuery
- VM Migration: VM migration tools
- Cloud Foundation Toolkit: Infrastructure as Code templates
- KF: Cloud Foundry to Kubernetes

API PLATFORM AND ECOSYSTEMS

- API Analytics: API metrics
- API Monetization: Monetize APIs
- Apigee API Platform: Develop, secure, monitor APIs
- API Gateway: Fully managed API Gateway
- Apigee Hybrid: Manage hybrid/multi-cloud API environments
- Apigee Sense: API protection from attacks
- Cloud Endpoints: Cloud API gateway
- Cloud Healthcare API: Healthcare system GCP interoperability
- Developer Portal: API management portal
- GCP Marketplace: Partner & open source marketplace
- AppSheet: No-code App creation

GOOGLE MAPS PLATFORM

- Directions API: Get directions between locations
- Distance Matrix API: Multi-origin/destination travel times
- Geocoding API: Convert address to/from coordinates
- Geolocation API: Derive location without GPS
- Maps Embed API: Display iframe embedded maps
- Maps JavaScript API: Dynamic web maps
- Maps SDK for Android: Scans for Android apps
- Maps SDK for iOS: Maps for iOS apps
- Maps Static API: Display static map images

GOOGLE MAPS PLATFORM (CONT.)

- Maps SDK for Unity: Unity SDK for games
- Maps URLs: URL scheme for maps
- Places API: Rest-based Places features
- Places Library, Maps JS API: Places features for web
- Places SDK for Android: Places features for Android
- Places SDK for iOS: Places feature for iOS
- Roads API: Convert coordinates to roads
- Street View Static API: Static street view images
- Street View Service: Street view for JavaScript
- Time Zone API: Convert coordinates to timezone

GOOGLE WORKSPACE

- Admin SDK: Manage Workspace resources
- AMP for Email: Dynamic interactive email
- Apps Script: Extend and automate everything
- Calendar API: Create and manage calendars
- Classroom API: Provision and manage classrooms
- Cloud Search: Unified search for enterprise
- Docs API: Create and edit documents
- Drive Activity API: Retrieve Google Drive activity
- Drive API: Read and write files
- Drive Picker: Drive file selection widget
- Email Markup: Interactive email using schema.org
- Workspace Add-ons: Extend G Suite apps
- Workspace Marketplace: Storefront for integrated applications
- Gmail API: Enhance Gmail
- Hangouts Chat Bots: Conversational bots in chat
- People API: Manage user's Contacts
- Sheets API: Read and write spreadsheets
- Slides API: Create and edit presentations
- Task API: Search, read & update Tasks
- Vault API: Manage your organization's eDiscovery

MOBILE (FIREBASE)

- Cloud Firestore: Document store and sync
- Cloud Functions for Firebase: Event-driven serverless applications
- Cloud Storage for Firebase: Object storage and serving
- Crashlytics: Crash reporting and analytics
- Firebase A/B Testing: Create A/B test experiments
- Firebase App Distribution: Trusted tester early access
- Firebase Authentication: Drop-in authentication
- Firebase Cloud Messaging: Send device notifications
- Firebase Dynamic Links: Link to app content
- Firebase Extensions: Pre-packaged development solutions
- Firebase Hosting: Web hosting with CDN/SSL
- Firebase In-App Messaging: Send in-app contextual messages
- Firebase Performance Monitoring: App/web performance monitoring
- Firebase Predictions: Predict user targeting
- Firebase Realtime Database: Real-time data synchronization
- Firebase Remote Config: Remotely configure installed apps
- Firebase Test Lab: Mobile testing device farm
- Google Analytics for Firebase: Mobile app analytics
- ML Kit for Firebase: ML APIs for mobile

ADDITIONAL RESOURCES

- Google Cloud Home Page: [cloud.google.com](#)
- Google Cloud Blog: [cloud.google.com/blog](#)
- Google Cloud Platform Podcast: [gcppodcast.com](#)
- Kubernetes Podcast from Google: [kubernetespodcast.com](#)
- Google Cloud Open Source: [opensource.google/projects/list/cloud](#)
- GCP Medium Publication: [medium.com/google-cloud](#)
- Apigee Blog: [apigee.com/about/blog](#)
- Firebase Blog: [firebase.googleblog.com](#)
- Workspace Developers Blog: [gsuite-developers.googleblog.com](#)
- Workspace GitHub: [github.com/gsuitedevs](#)
- Workspace Twitter: [twitter.com/gsuitedevs](#)
- Google Cloud Certifications: [cloud.google.com/certification](#)
- Google Cloud System Status: [status.cloud.google.com](#)
- Google Cloud Training: [cloud.google.com/training](#)
- Google Developers Blog: [developers.googleblog.com](#)
- Google Maps Platform Blog: [mapsplatform.googleblog.com](#)
- Google Open Source Blog: [opensource.googleblog.com](#)
- Google Security Blog: [security.googleblog.com](#)
- Kaggle Home Page: [www.kaggle.com](#)
- Kubernetes Blog: [kubernetes.io/blog](#)
- Regions and Network Map: [cloud.google.com/about/locations](#)
- DORA - Software & Delivery Research: [cloud.google.com/devops](#)





PARTNERSHIP GOOGLE

Google Cloud

Google, attraverso la sua offerta Google Cloud Platform (GCP), è leader mondiale nell'offerta di applicazioni e piattaforme cloud che si distinguono dalle altre per innovazione, potenza, scalabilità e sicurezza.

Cloudtec dispone delle competenze necessarie ad utilizzare al meglio la tecnologia Google Cloud per realizzare progetti di trasformazione digitale innovativi ed efficaci.



Google Cloud



CERTIFICAZIONI

Google Cloud Partner

G Suite Deployment Services Specialist

Google Education Deployment Credential

Chrome Enterprise and SMB Deployment Credential

Google Professional Cloud Architect

Google Professional Data Engineer

Google Professional Machine Learning Engineer

Google Professional Cloud Developer

Google Professional Cloud DevOps Engineer

Google Professional Cloud Security Engineer

Google Professional Cloud Network Engineer





Google

Certified Professional
Cloud Architect

A Professional Cloud Architect enables organizations to leverage Google Cloud technologies. With a thorough understanding of cloud architecture and Google Cloud Platform, this individual can design, develop, and manage robust, secure, scalable, highly available, and dynamic solutions to drive business objectives.

The Google Cloud Certified - Professional Cloud Architect exam assesses your ability to:

- ✓ Design and plan a cloud solution architecture
- ✓ Manage and provision the cloud solution infrastructure
- ✓ Design for security and compliance
- ✓ Analyze and optimize technical and business processes
- ✓ Manage implementations of cloud architecture
- ✓ Ensure solution and operations reliability





Nuove professioni, vecchie competenze...

- ✓ Capacità di «**technical networking**»
- ✓ **Flessibilità**: capacità di imparare, di cambiare
Propensione all'**innovazione**
«Conoscenza»: da un valore assoluto ad un punto di partenza costantemente rinnovato
- ✓ Non è necessario essere «programmatori», ma avere il **digital mindset...**



1980/2000
Posto fisso/professione

2000/2020
Cambiare aziende del settore

2020/2040
Cambiare più lavori !



PARTNERSHIP

AudioCodes

Cloudtec è AudioCodes BOT Service Partner per applicazioni voicebot basate su tecnologia Google Dialogflow.

Infiot

Cloudtec integra la tecnologia Infiot nella propria piattaforma Cloudwork per collaborazione remota e telelavoro.

Pexip

La soluzione Pexip per Google Meet consente l'interoperabilità con sistemi di videoconferenza di terze parti, come Cisco, Polycom e Skype for Business

K Labs

K Labs eroga servizi di formazione su tecnologie ICT, 5G e Cloud.



PIATTAFORME

Cloudey

Cloudey è la **piattaforma cloud-based** per l'organizzazione di eventi e **formazione** in modalità virtual live

Cloudvision

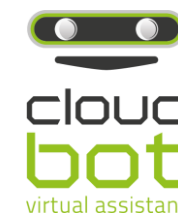
Cloudvision è una piattaforma cloud-native di **realtà assistita intelligente** in SaaS basata su tecnologia Google Cloud

Cloudmetrix

Cloudmetrix è una soluzione SaaS di **smart analytics** vendor-agnostic integrata con la Google Cloud Platform per l'analisi proattiva e predittiva di reti, infrastrutture IT ed IoT.

Cloudbot

CloudBot è una piattaforma cloud-based per la progettazione e l'implementazione di **Assistenti Digitali Intelligenti**.





Use Case #1: ASSISTENTE DIGITALE

Esigenza:

Aumentare l'efficacia e l'efficienza del servizio di supporto telefonico

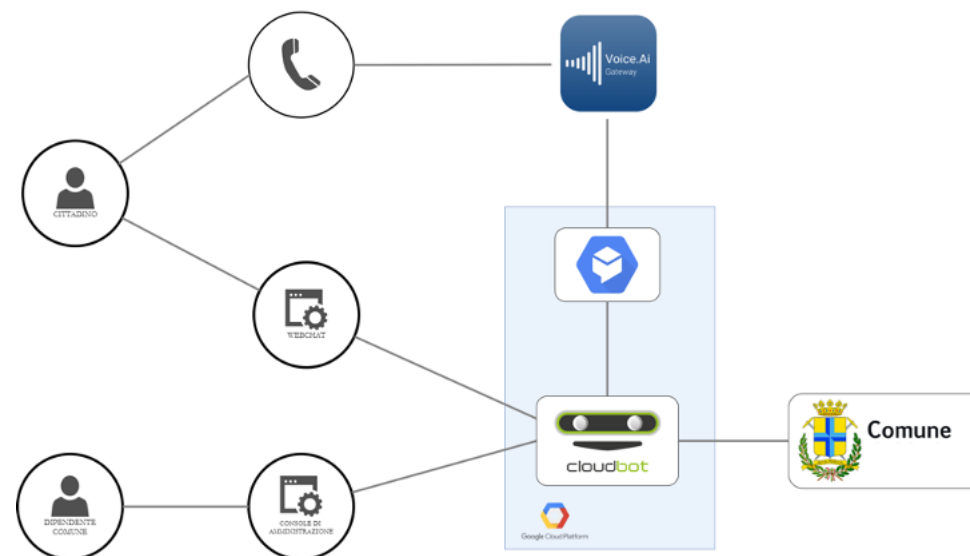
Soluzione:

Sviluppo di un Assistente Digitale in grado di offrire una interfaccia conversazionale (su linea telefonica e chat) con gli utenti in grado di comprendere le richieste analizzando il contesto della conversazione e supportando in modo contestuale e continuativo l'utente nella navigazione tra i vari servizi disponibili

Tecnologia:

Piattaforma Cloudbot istanziata su **Google Cloud Platform**, integrata con la soluzione **Google Dialogflow** (sistema che consente lo sviluppo di interfacce conversazionali con linguaggio naturale) e **AudioCodes Voice.AI Gateway**.

Creazione degli **intent** di risposta ed addestramento del sistema





Use Case #2: AUTOMAZIONE ATTIVITÀ GESTIONE ORDINI

Esigenza:

Diminuire i tempi di esecuzione e minimizzare gli errori di inserimento ordini clienti attraverso l'automazione intelligente

Soluzione:

Sviluppo di un sistema in grado di ricevere, analizzare e normalizzare gli ordini inviate attraverso mail, fax e telefono ed attivazione di un Assistente Digitale in grado di fornire supporto post-vendita alla clientela

Tecnologia:

Utilizzo dei servizi della Google Cloud Platform: **Document AI**, **Cloud AutoML**, **Cloud Storage**, **Pub/Sub**, **Dialogflow**

The screenshot displays the Google Cloud Platform Document AI interface for an 'Invoice Parser analysis'. The interface is divided into three main sections:

- Left Sidebar:** Contains navigation options: 'Overview' and 'Processors'. The 'Processors' section is active, showing a search bar and a list of processors.
- Central Table:** A table titled 'Schema Value' showing extracted fields from the invoice. The 'invoice_date' field is highlighted in blue.
- Right Panel:** A preview of the original invoice document, showing the header 'Acme Pest Control', the invoice number '#126935', and the date '11/27/2019'. Below the header is a table of line items and a summary table.

Schema	Value
supplier_name	Acme Pest Control LLC
supplier_address	145 Corporate In Nort...
invoice_id	126935
invoice_date	11/27/2019
receiver_name	Carrie Webb
receiver_address	909 Kuvalis Fort Apt. ...
due_date	12/13/2019
payment_terms	Net 30
currency	\$
line_item	3 Pest control chemi...

Quantity	Item	Unit Price	Amount
3	Pest control chemical	\$45.00	\$135.00
6	Pest control traps	\$8.00	\$48.00
4	Labor	\$45.00	\$180.00
Subtotal			\$363.00
Tax (0)			\$28.79
Service fee			\$12.45
Total			\$392.24
Amount Paid			\$0.00
Amount Due			\$392.24



Use Case #3: SMART PICKING INDUSTRIALE

Esigenza:

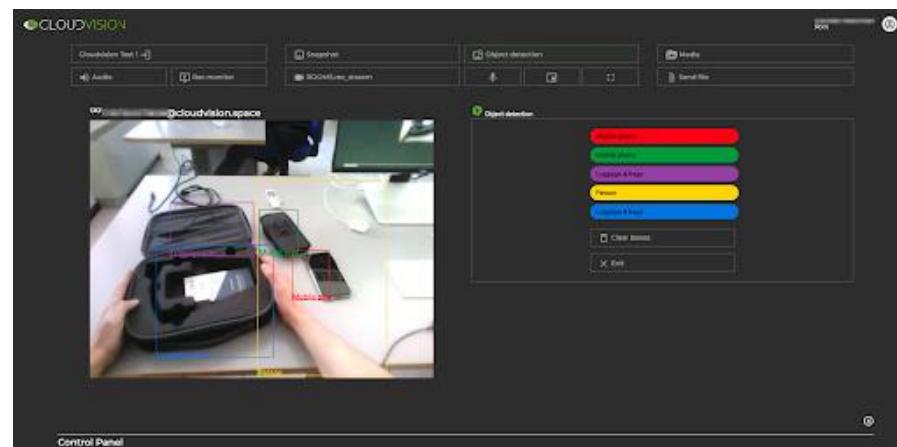
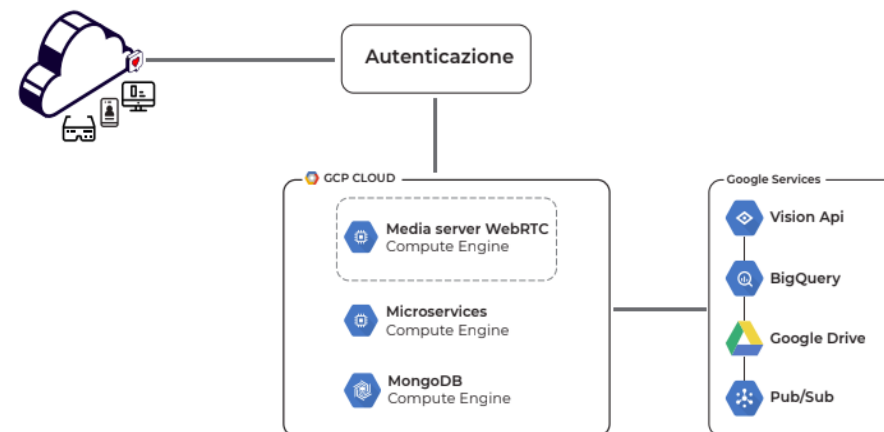
Fornire ad un operatore supporto visuale attraverso smartglasses per la navigazione interna ai magazzini, per l'identificazione dei componenti da prelevare e per la visualizzazione di altre informazioni correlate (indice di rotazione dei colli, componenti in carico e scarico, etc.)

Soluzione:

Integrazione della soluzione Cloudvision con WMS aziendali (o sistemi simili), realizzazione di un motore dedicato per il riconoscimento dei colli in prelievo, implementazione di un sistema di navigazione interna al magazzino.

Tecnologia:

L'operatore viene alternativamente dotato di Iristick Z1 Premium o Google Glass EE2. Gli algoritmi di riconoscimento immagini si basano, a seconda dei casi, sulle **Google Vision APIs**, sulle librerie di object detection di **Tensorflow**, ARCore o OpenCV. I **servizi di navigazione indoor** si basano sull'interazione con BSSID WLAN.



IL CLOUD COME ENABLER DELLA DIGITAL TRANSFORMATION

Ing. Stefano Carlini
Head of Business Development and Strategic Alliances, Cloudtec S.r.l.
stefano.carlini@cloudtec.it
<http://www.linkedin.com/in/stefanocarlini>

Ing. Massimo Perillo
Chief Operating Officer, Cloudtec S.r.l.
massimo.perillo@cloudtec.it
linkedin.com/in/massimoperillo






CONTATTI

www.cloudtec.it



Sede Legale


Via Emilio Salgari, 17
41123 Modena (MO)

 +39 059 821 844



Sede Operativa

Via Trapani 1/D
90141 Palermo (PA)

 +39 091 7840321

